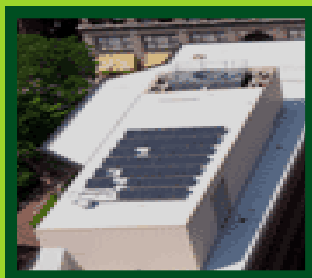


# May GPAEE Event:

## Friends Center Tour: *21st Century Environmental Building Design*

(May 21, 2009)



- Event: Friends Center Tour: 21st Century Environmental Building Design
- Date : **Thursday, 5/21/09**
- Time:
  - 11:30 AM - 12:00 PM Registration / Networking
  - 12:00 PM - 12:45 PM Lunch
  - 12:45 PM - 2:00 PM Seminar & Tour
- Location: Friends Center  
1501 Cherry Street  
Philadelphia, PA 19102  
(215) 241-7000  
<http://maps.google.com/maps?f=q&hl=en&q=1501+Cherry+Street,+Philadelphia,+PA+19102&om=1>
- Cost: \$30.00 for GPAEE Members / \$35.00 for Non-Members
  - If Pay @ Door: \$40.00 GPAEE Members /Non-Members
  - Student price is \$15.00
- Secure Online Registration:
  - 1) Click on the *Secure Online Registration* Icon below
  - 2) Register

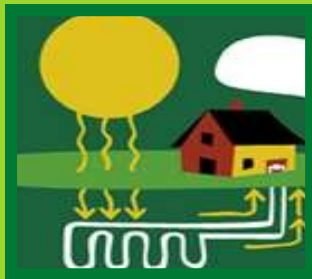


\*\* [Note: Continued on Page 2] \*\*

# May GPAEE Event:

## Friends Center Tour: *21st Century Environmental Building Design*

(May 21, 2009)



- Non-Web Registration: It is preferred that all Event Attendees register on-line. However, if for some reason you cannot register on-line, then please contact Randy Haines directly (see Randy's contact info below).
- Contact: Randy Haines, Jefferson Health Systems  
[randolph.haines@jefferson.edu](mailto:randolph.haines@jefferson.edu)  
(215) 503-6099
- Meeting Background: The Friends Center is located between 15<sup>th</sup> & Cherry Streets in downtown Philadelphia, and is the hub of Philadelphia's Quaker community. In order to plan for the long-term viability of the Center, as well as to preserve the property's key Quaker characteristics, the Friends Center's Board has undertaken a major environmental renovation of its facilities. The key goals to accomplish this environmental sustainability are: conserving energy, eliminating greenhouse gas emissions, protecting the watershed from urban storm water runoff, and to make the Friends Center responsive to the needs of the 21<sup>st</sup> century. In order to accomplish these goals, the Friends Center has used the following integrated green design strategies:
  - Geothermal heating & cooling
  - Vegetated Roof
  - Solar PV Array
  - Open Design
  - Storm Water capture & re-use
- Parking: Parking Lot on northeast side of 15th & Cherry Streets, which offers discounted parking with a stamp from the front desk of the Friends Center.